

# Tetra<sup>®</sup> PowerStrip

## LED Lighting System

Lighting solutions for single and double-sided cabinet signs



imagination at work

# Tetra® PowerStrip

## Energy efficient solutions for cabinet signs

**Tetra PowerStrip** and **Tetra PowerStrip DS** from GE Lighting Solutions are the innovative LED systems that replace fluorescent tubes in cabinet signs resulting in reduced energy costs, improved uniformity and lower maintenance expenses.

**Tetra PowerStrip** is our 12 Volt LED system for single-sided cabinet signs, and **Tetra PowerStrip High Output** and **Tetra PowerStrip DS** is our 24 Volt LED system for double-sided cabinet signs.

### Tetra® PowerStrip

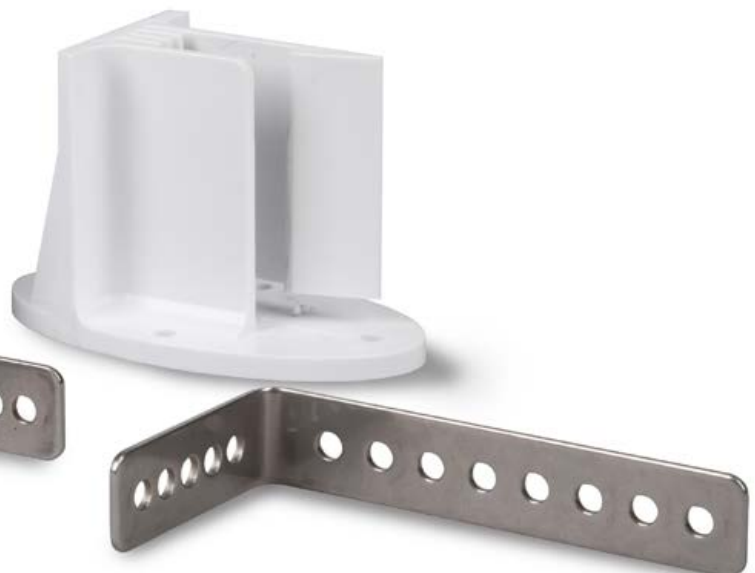
- Single-sided LED system
- 12 Volt System, 24 Volt System for HO
- Pre-drilled holes and industrial grade mounting tape for easy install

### Tetra® PowerStrip DS

- Double-sided LED system
- 24 Volt System
- Rail can be custom cut to length

## Cabinets have never been easier to install

**Tetra PowerStrip** is a low-voltage lighting system that does not require the construction of sockets for mounting. The easy-to-handle system eliminates the handling of fragile glass tubes and can be cut between modules for easy installation in new or retrofit signs of any size.



## LED Benefits Drive Sales

**Tetra PowerStrip** has the potential to increase sales by offering valued benefits for end-user driven projects. This LED system is a cost effective investment for sign owners who are conscious about their energy and maintenance costs, brand image and environmental impact.

**Tetra PowerStrip** drastically slashes energy costs by offering up to 79% energy savings over T12HO fluorescent while providing better light consistency across the sign face. This lighting system delivers uniform light up to 4 times longer than fluorescent. This long life drastically reduces maintenance costs while protecting brand image, and it's all backed up with a 5 year limited warranty. The LED system contains no lead, mercury or glass making handling and disposal less of a concern.



Easy clip-on installation of mounting brackets is a snap.

# Tetra Powerstrip High Output and Tetra Powerstrip DS High Output are now both 24 Volt LED System

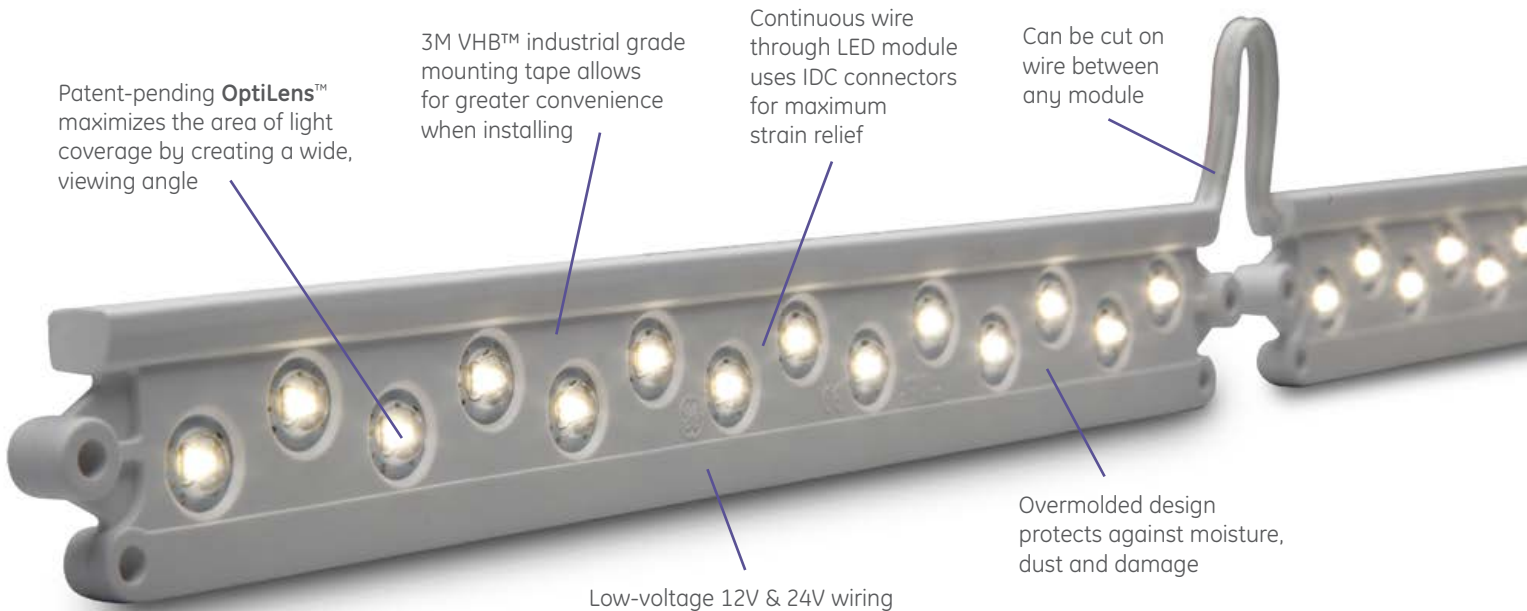
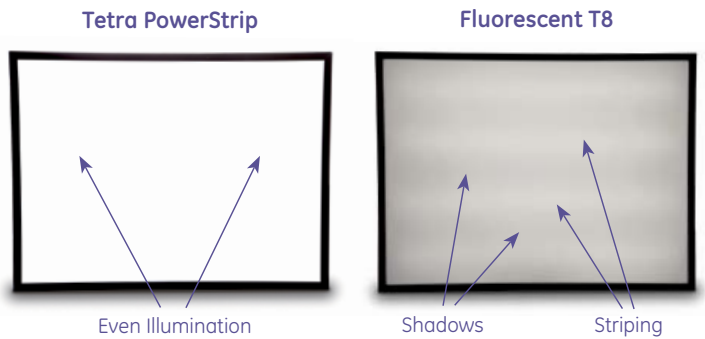
When brightness matters most, **Tetra PowerStrip High Output** and **Tetra PowerStrip DS High Output** deliver up to 35% more light than standard Tetra, commanding attention to your customer's brand image.

# The OptiLens™ Difference

**Tetra PowerStrip** features **OptiLens™**, an innovative technology that maximizes LED performance. This patent-pending optical lens helps spread light exactly where it's needed most, resulting in bright, uniform light distribution across the entire sign face. Tetra PowerStrip with OptiLens provides over 20% greater surface area coverage than just LEDs alone. We have added **more LED's** to improve **uniformity**.

# GE Reliability

Only GE Lighting Solutions has the depth of experience that comes from supplying over 20 million feet of Tetra LED lighting systems across the globe. Every Tetra product is backed with a reputation for reliability that is unsurpassed in the industry. We perform stringent testing of the entire system-utilizing GE Six Sigma standards-rather than just pass on supplier reported performance claims.



## Tetra® PowerStrip DS

High output (28 LEDs per module) or standard (10 LEDs per module) Tetra PowerStrip

## Tetra® PowerStrip SS

High output (14 LEDs per module) or standard (5 LEDs per module) Tetra PowerStrip

# Components

SKU	Description	Package Quantity
GESS71-1	Tetra PowerStrip 7100K	48 Modules
GESS50-1	Tetra PowerStrip 5000K	48 Modules
GESS41-1	Tetra PowerStrip 4100K	48 Modules
GESS32-1	Tetra PowerStrip 3200K	48 Modules
GEDS71-1	Tetra PowerStrip DS 7100K	32 Modules
GEDS50-1	Tetra PowerStrip DS 5000K	32 Modules
GEDS41-1	Tetra PowerStrip DS 4100K	32 Modules
GEDS32-1	Tetra PowerStrip DS 3200K	32 Modules
GESS24H71-1	Tetra PowerStrip High Output 7100K	48 Modules
GESS24H50-1	Tetra PowerStrip High Output 5000K	48 Modules
GESS24H41-1	Tetra PowerStrip High Output 4100K	48 Modules
GESS24H32-1	Tetra PowerStrip High Output 3200K	48 Modules
GEDSH71-2	Tetra PowerStrip DS High Output 7100K	32 Modules
GEDSH50-2	Tetra PowerStrip DS High Output 5000K	32 Modules
GEDSH41-2	Tetra PowerStrip DS High Output 4100K	32 Modules
GEDSH32-2	Tetra PowerStrip DS High Output 3200K	32 Modules
9409	18 AWG Supply Wire (0.82 mm <sup>2</sup> )	500 ft./spool (152.4 m)
191600041	22-14 AWG Twist-On Wire Connectors (0.33 – 2.08 mm <sup>2</sup> )	500/PK
192160004	18-14 AWG In-line Connectors (IDC) (0.82 – 2.08 mm <sup>2</sup> )	500/PK
GETMEC1	18 AWG Wire End Caps (0.82 mm <sup>2</sup> )	100/PK
GEDSRL08	Tetra Mounting Rail	8 Rails
GEDSLB1	Tetra Mounting Rail Assembly Bracket	20/PK
GEDSRC1	Tetra Mounting Clip	8/PK

## Technical Specifications

Specification Item	CCT	Typical Brightness (lumens/module)	Voltage	LEDs Module	Energy Consumption (Strip/Module)	Energy Consumption (System/Module)	Power Supply Loading	Viewing Angle
Tetra PowerStrip	7100K, 5000K 4100K, 3200K	280 210	12V	5	2.40	2.82	20 Modules / 60W PS	140°
Tetra PowerStrip DS	7100K, 5000K 4100K, 3200K	560 420	24V	10	4.80	5.64	16 Modules / 100W PS	140°
Tetra PowerStrip High Output	7100K, 5000K 4100K, 3200K	368 344	24V	14	2.90	3.41	30 Modules / 100W PS	140°
Tetra PowerStrip DS High Output	7100K, 5000K 4100K, 3200K	735 687	24V	28	5.80	6.82	16 Modules / 100W PS	140°

Specification Item	Tetra PowerStrip		
Cutting Resolution	Cut on wire between every module		
Power Supply	GEPS12-20 Input: 90-264VAC; Output: 12VDC GEPS12-60-NA Input: 108-305VAC; Output: 12VDC GEPS12-60-GL Input: 108-305VAC; Output: 12VDC GEPS12W-60 Input: 90-264VAC; Output: 12VDC GEPS12D-60U Input: 108-305VAC; Output: 12VDC GEPS12-180U Input: 90-305VAC; Output: 12VDC		GEPS24-20 Input: 90-264VAC; Output: 24VDC GEPS24D-80U Input: 90-305VAC; Output: 24VDC GEPS24-100-NA Input: 108-305VAC; Output: 24VDC GEPS24-100-GL Input: 108-305VAC; Output: 24VDC GEPS24-180U Input: 90-305VAC; Output: 24VDC
Maximum Supply Wire Limits	<b>60W,80W, 100W,180W</b>	<b>20W</b>	<b>Supply Wire Gauge</b>
	20 ft. (6.1 m)	120 ft. (36.6 m)	18AWG/0.82mm <sup>2</sup> supply wire - 9409
	25 ft. (7.6 m)		16AWG/1.31mm <sup>2</sup> supply wire
	35 ft. (10.6 m)		14AWG/2.08mm <sup>2</sup> supply wire
	40 ft. (12.1 m)		12AWG/3.31mm <sup>2</sup> supply wire
	<i>Wiring to be installed in accordance with Article 725 of the National Electric code (NEC).</i>		
Operating Environment	-40 °C to +60 °C		
Module Dimensions (h x l x w)	Tetra PowerStrip: 0.45 x 1.14 x 9.20 in. (11 x 29 x 234 mm) Tetra PowerStrip DS: 0.40 x 1.34 x 9.20 in. (10 x 34 x 234 mm)		Tetra PowerStrip High Output: 0.47 x 9.29 x 1.12 in. (12 x 29 x 236 mm) Tetra PowerStrip DS High Output: 0.55 x 8.98 x 1.32 in. (14 x 34 x 228 mm)
Sign Dimensions	For best results, recommended sign depth is 5 inches (127mm) or greater		For best results, recommended sign depth is 10 inches (254mm) or greater
Warranty	GE offers a limited system warranty of up to five (5) years		
System Certifications	UL Recognized #E219167, UL Classified #E229508, CE, C-tick, RoHS.		



www.gelighting.com

Tetra®, GE and the GE Monogram are trademarks of the General Electric Company. Information provided is subject to change without notice. All values are design or typical values when measured under laboratory conditions. GE Lighting Solutions, LLC is a subsidiary of the General Electric Company. © 2014 GE Lighting.

SIGN127 (Rev 08/18/14)